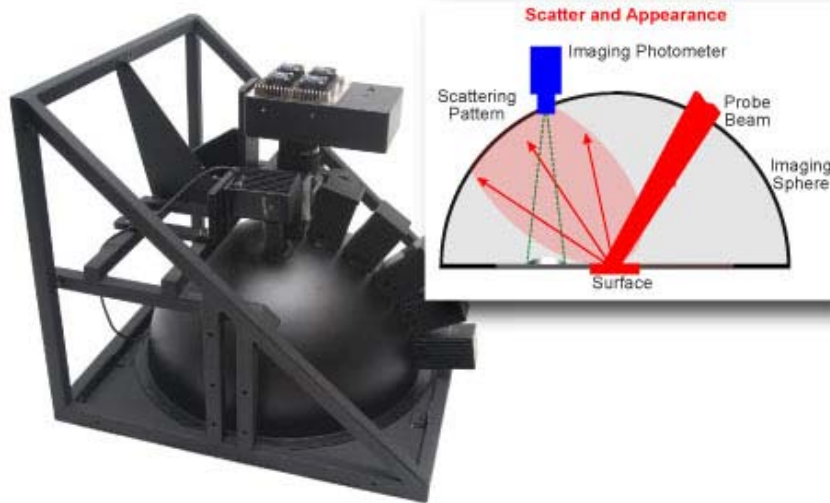


# Imaging Sphere – Scatter and Appearance (IS-SA)

*High speed, low cost, scatter and appearance measurement system for metal, paper, plastics and transmissive films*



RADIANT

Radiant Imaging's new Imaging Sphere™ (IS-SA) utilizes scattered light measurement to rapidly and accurately characterize surface roughness and other imperfections in a wide range of reflective surfaces and transmissive films. System software automatically converts raw scatter measurements into commonly used surface parameters such as TIS (Total Integrated Scatter), RA (average surface roughness), BRDF and BTDF. Based on patented technology developed jointly with Royal Philips Electronics, the IS-SA acquires data over an entire  $2\pi$  steradian in a single measurement, taking just seconds or less, which is a dramatic improvement over traditional scatter instruments. These utilize moving goniometers to slowly acquire a comprehensive data set, point by point, or else make higher speed measurements at only one or two fixed angles. The unique combination of high speed and high resolution makes the rugged IS-SA well suited for both R&D programs and production line QC/QA.

The turnkey IS-SA system consists of a 20" (508 mm) diameter, hemispherical measurement chamber, mated with our PM-1400 Series Imaging Colorimeter (with a 512x512 pixel detector). Other imagers offering different dynamic range and resolution are available as well. The system incorporates multiple illuminators each equipped with a white LED light source and built in circuitry to constantly monitor illumination light levels. The IS-SA includes a full software suite, which enables manual and fully automated control of all system hardware, as well as complete data analysis and display. Data can be displayed as isometric plots, cross-sectional graphs, radar plots, bit maps and color graphs. For technical or sales support contact us at [sales@radiantimaging.com](mailto:sales@radiantimaging.com) or call us at 425-844-0152.

## IS-SA Advantages

- Many times faster than BRDF goniometers.
- More economical than other BRDF instruments.
- Operates in ambient light conditions.
- Characterizes both scattered light and specular reflections.
- Operates in both transmission and reflection modes.

## Performance Specifications

<b>Maximum Sample Size</b>	500 mm x unlimited
<b>Standard Illumination Angle</b>	0°, 10°, 20°, 30°, 40°, 50°, 60° and 70°
<b>Standard Illumination Source</b>	White LED
<b>Illumination Area</b>	2 - 10 mm (2 mm step)
<b>Angular Resolution</b>	0.5°
<b>Dynamic Range</b>	14 bits (16384 gray scale levels)
<b>Sensitivity</b>	
Minimum Luminance	40 nits
Minimum Reflectivity	1%
<b>System Accuracy</b>	
Luminance	±5%
Chromaticity coordinates [x,y]	±0.005
<b>Short term repeatability</b>	
Luminance	±5%
Chromaticity coordinates [x,y]	±0.0006
<b>Minimum measurement time</b>	
Photopic	1 sec
Color	5 sec
<b>Dimensions (LxWxH)</b>	550 mm x 640 mm x 670 mm
<b>Weight</b>	30 kg
<b>Optional Equipment</b>	X,Y and Phi automated stage (material positioning) Near-field alignment camera

## Testing Capabilities

TIS (Total Integrated Scatter)  
 RA (average surface roughness)  
 BRDF/BTDF  
 Materials

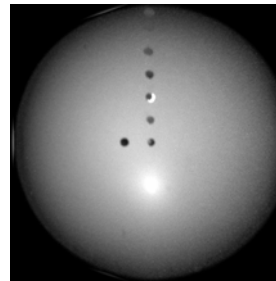
- Metal
- Paper
- Plastics
- Paints
- Films (BEF, Polarizer)
- Currency

## Host Computer Requirements

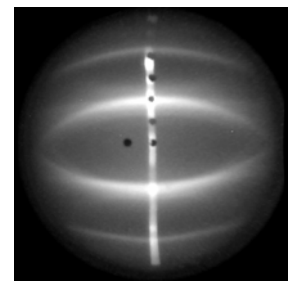
Pentium IV  
 512 MB RAM  
 Windows® 2000/XP  
 USB 2.0 Interface

## Imaging System Compatibility

The Imaging Sphere is normally configured with a Radiant Imaging PM-1400 series Imaging Colorimeter and a 512x512 detector. However, any of the Radiant Imaging PM Series™ Imaging Photometers and Colorimeters are compatible with the Imaging Sphere, offering the user an expanded range of performance and cost options. Contact the Radiant Imaging Sales staff for camera recommendations specific to your application.



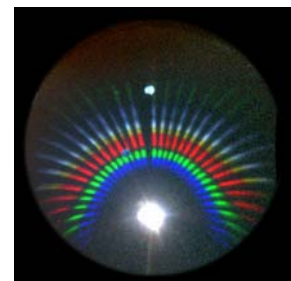
Luminance Plot



Luminance Plot



Color Plot  
(Euro hologram)



Color Plot  
(Decorative foil)