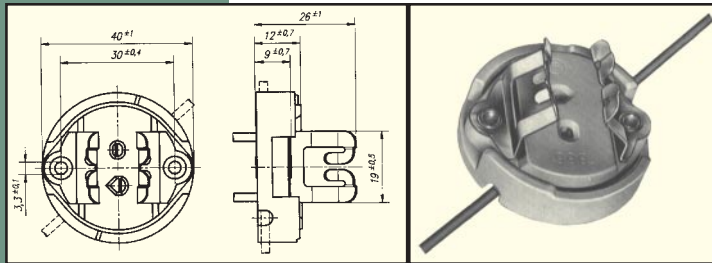


# Lamp Holders

SphereOptics is pleased to offer the Gilway Technical Lamp Company's superior quality standard and commercial grade lampholders for use with our Photopic and Spectral Lamp Measurement Systems.

We also offer custom designed lampholders for a variety of lamp types. Please contact us for additional information on customized solutions.

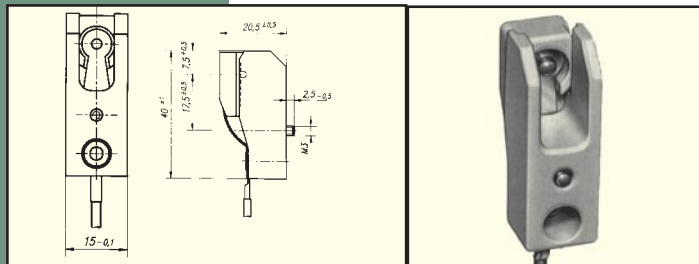
## R7 BASE LAMPHOLDERS



### H999 — 9.5mm Base Lamp Holder

Lamp Base:	GY9.5 GZ9.5
Holder:	Ceramic
Holder Max Rating:	1,000 Volts 10 Amps 230°C
Wire:	16 ASG Stranded Blue Teflon Insulation 130mm wire length Terminated with round clips

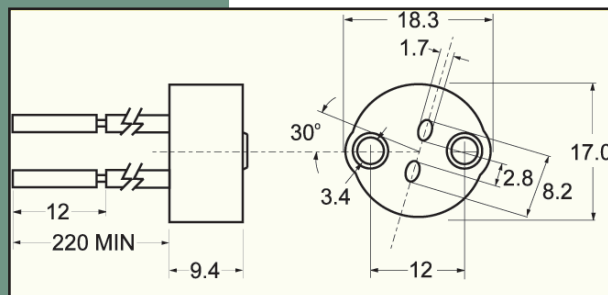
## 9.5mm BASE LAMPHOLDERS



### H943 — R7 Base Lamp Holder

Lamp Base:	R7s
Holder:	Ceramic
Max Ratings:	250 Volts 8 Amps 200°C
Wire:	18 AWG Stranded Silicon Insulated 140mm wire length

## COMMERCIAL GRADE LAMPHOLDERS



### HT456 — Commercial Grade Lamp Holder

Lamp Base:	G-4, GZ-4, GX-5.3 GZ6.35, G6.35, GY6.35 MR-11, MR-16
Holder:	Ceramic
Holder Max. Rating:	250 Volts 100 Watts 200°C
Wire:	18 AWG Stranded Silicon & Fiberglass Insulation 220mm wire length



[www.sphereoptics.com](http://www.sphereoptics.com)

### USA

SphereOptics Hoffman, LLC  
Tel: 603-746-2000 • US Sales: 858-695-2895  
Fax: 603-746-3007  
Email: [sphere-optics@sphereoptics.com](mailto:sphere-optics@sphereoptics.com)

### GERMANY

SphereOptics Hoffman GmbH  
Tel: +49 (0) 7556-9299666  
Fax: +49 (0) 7556 50108  
Email: [info@sphereoptics.com](mailto:info@sphereoptics.com)

### FRANCE

SphereOptics Hoffman SARL  
Tel: +33 (0) 1 69 07 21 84  
Fax: +33 (0) 1 69 07 71 38  
Email: [infofr@sphereoptics.com](mailto:infofr@sphereoptics.com)