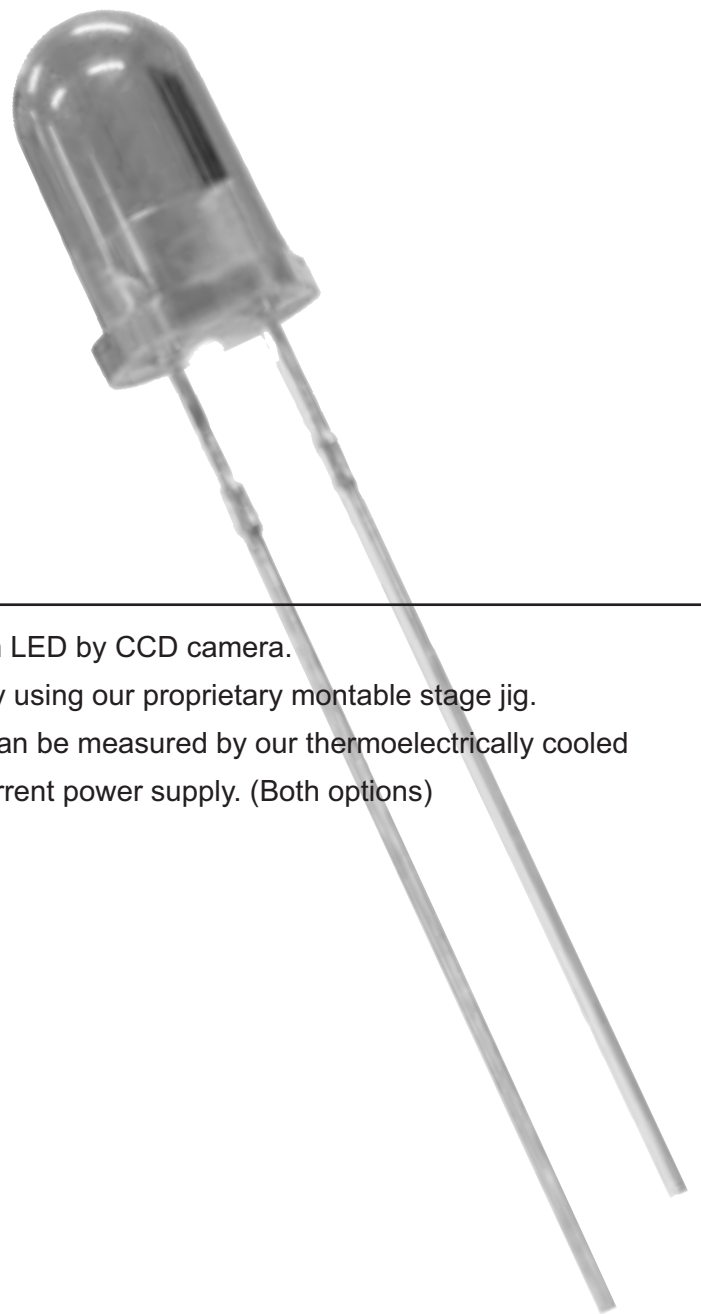


LED Profiler

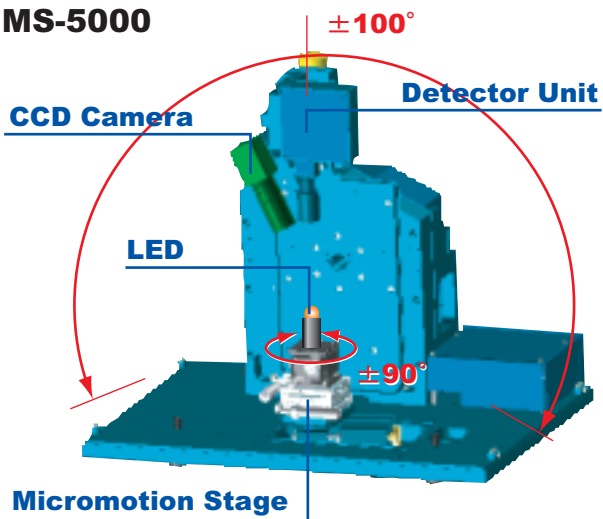
IMS-5000

Features

- I) Precise alignment with LED by CCD camera.
- II) Easy setting of LED by using our proprietary montable stage jig.
- III) Genuine LED profile can be measured by our thermoelectrically cooled stage and constant current power supply. (Both options)



IMS-5000



LED Profiler, IMS-5000 has been released by Asahi Spectra as most powerful instrument to evaluate uncertain LED in quality among similar apparatuses.

CCD camera can precisely align with LED sample, and any kinds of profiles you need are available by IMS-5000.

(Spectroradiometry, Photometry, Colorimetry with 2D/3D rectangular or polar view)

IMS-5000 will be recommended for LED manufacturers as well as LED users.

CCD Camera

CCD camera enables precise, easy alignment with LED sample and reliable measurement.

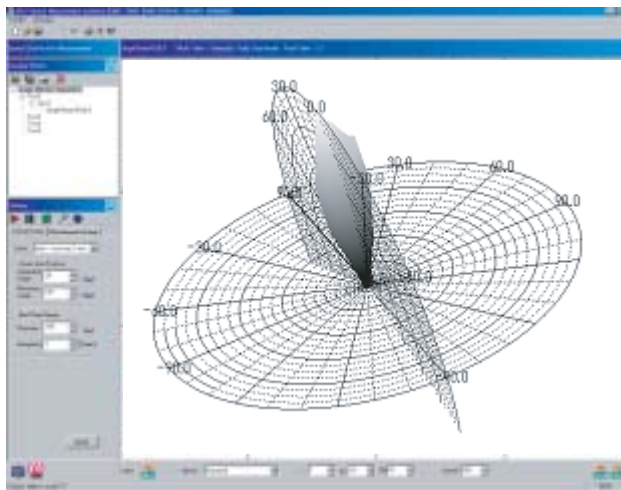


Top



Side

Software

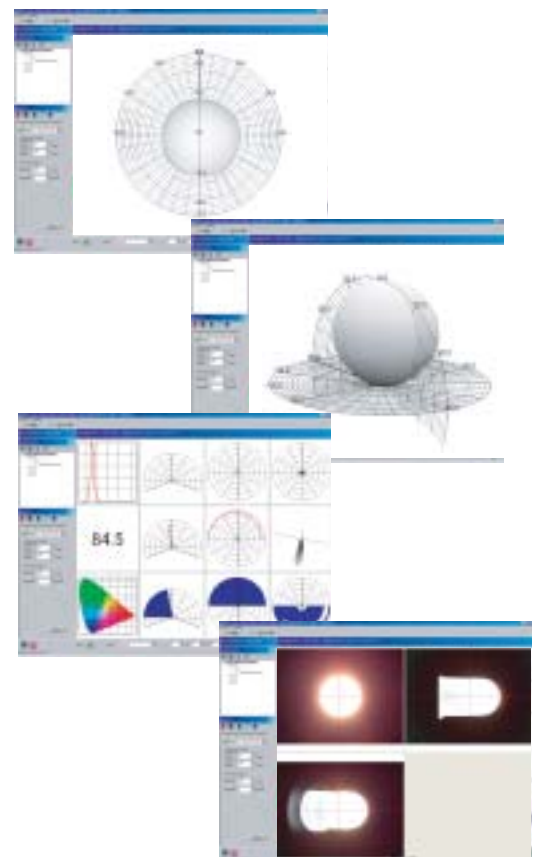


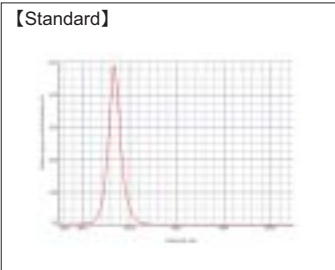
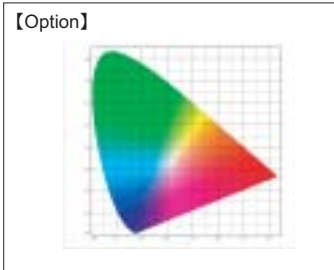
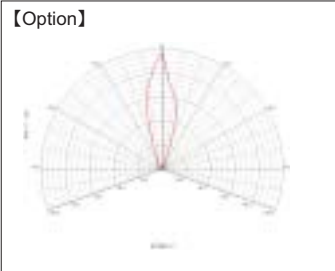
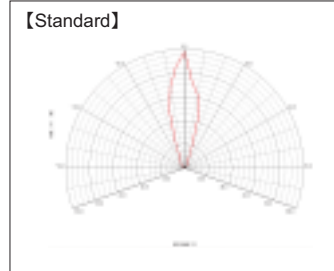
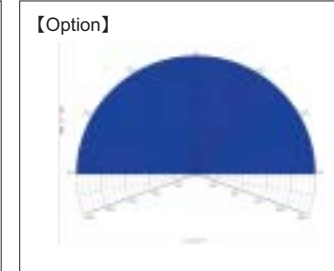
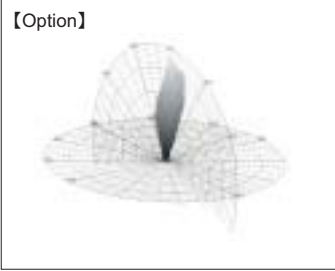
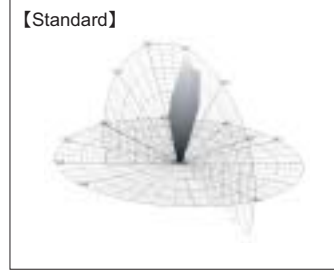

Recommended Hardware Requirements

Software Operating System : Windows XP

CPU : Pentium 4 - 2.8GHz or better

RAM : 1 GB or better



	Spectroradiometry	Photometry	Colorimetry
Optical Property	[Standard] 	[Standard] <div style="font-size: 2em; text-align: center;">98.3</div>	[Option] 
Spatial Distribution (2D Polar View)	[Option] 	[Standard] 	[Option] 
Spatial Distribution (3D Polar View)	[Option] 	[Standard] 	[Option] 
	<ul style="list-style-type: none"> - Center Wavelength - Peak Wavelength - FWHM - 2D/3D Rectangular View - Time Course 	<ul style="list-style-type: none"> - 2D/3D Rectangular View - Time Course 	<ul style="list-style-type: none"> - Chromaticity Diagram (X, Y) - Dominant Wavelength - Color Purity - Tristimulus Values - Correlated Color Temperature - Time Course

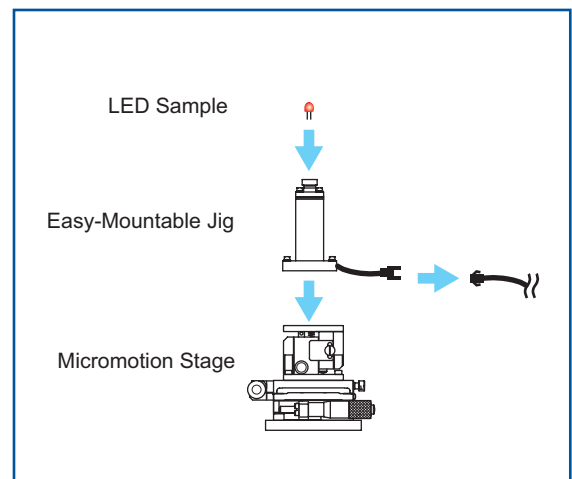
Easy-Mountable Jig for LEDs

Recently many kinds of LEDs with various size are available as LEDs market is growing up. We will offer two typical mountable jigs as standard set and they must help your easy mounting. Also any custom-ordered jigs available through Asahi Spectra. For more detail please contact us, info@asahi-spectra.com



- Standard Set**
- Oval LED, 3mm diameter
 - Oval LED, 5mm diameter

*Easy-mountable jig for SMT LEDs available.



Standard Set

- LED Profiler
- Software (CD-ROM) *4 kinds of analyses available
- Communication Cable
- AC Cable
- Easy-Mountable Jigs for oval LED with 3mm/5mm diameter

Accessories

- Software (CD-ROM) *More kinds of analyses available
- Personal Computer
- Printer
- Any kinds of Easy-Mountable Jigs (SMT LEDs or others)
- Thermoelectrically Cooled Stage (**Recommended**)
- Constant Current Power Supply (**Recommended**)
- Grating Polychromator for UV (200-700nm)
- Grating Polychromator for NIR (580-1050nm)
- Bandpass Filter
- Neutral Density Filter

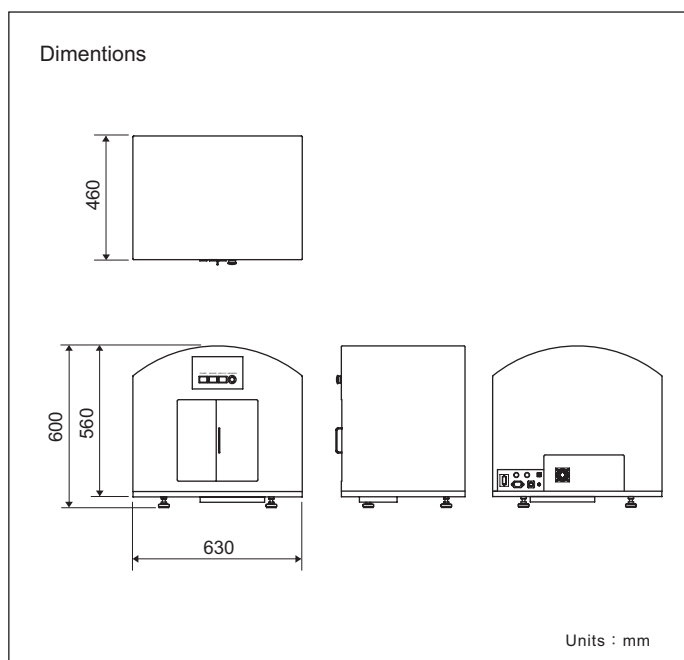
Specifications

Model : IMS-5000
Detector Unit : Grating Polychromator
 : Single, Czerny-Turner
Focal Length : 75mm
F-number : 5.6
Wavelength : 350-840nm
Wavelength Precision : +/-1.2nm
Wavelength Reproducibility : +/-0.6nm
Resolution : 5.5nm at 546.1nm
Stray Light : 0.1%
Sensor : NMOS (Linear Image Sensor ,1024 elements)
Exposure Time : 20 msec - 30 sec

Measurable Field Angle : 1 degree
Measurable Beam Diameter : 9mm diameter
Method of Scanning : Step Scan
Field of View : +/-100 degree
Azimuthal Accuracy : 0.05 degree
Azimuthal Reproducibility : 0.1 degree
Spatial Sampling Resolution : 0.001 degree
Rotational Resolution : 0.0045 degree
Rotational Reproducibility : 0.03 degree
Stage : XYZ Micromotion Stage
 : X-axis Direction Stroke +/-12.5mm (Manual)
 : Y-axis Direction Stroke +/-12.5mm (Manual)
 : Z-axis Direction Stroke +/-5mm (Manual)
 : Rotation Direction +/-90 degree (Automatic)

XYZ Indication : Analog Indication by Micrometer
LED Alignment : CCD Camera
Input Voltage : AC85V - 264V
Power Consumption : 300VA or under
Interface : RS485
Environmental Conditions : Temperature 5-35 degree celsius
(Operating within performance specifications) : Humidity max.80% or under (non-condensing)
Dimensions : 630(W) x 460(D) x 600(H) mm
Weight : 78 kg

Dimensions



*We accept no responsibility for any errors or omissions, and we reserve the right to modify design, characteristics and products at any time without obligation.

ASAHI SPECTRA USA

23505 Crenshaw Blvd., Suite 225 Torrance, CA 90505 USA

TEL : 310.530.5855 / FAX : 310.325.8974

Email : info@asahi-spectra.com

www.asahi-spectra.com